

# ŠKODA KUSHAQ

EXPERIENCE THE EUROPEAN SUV



**ŠKODA**  
SIMPLY CLEVER



## EXTERIOR



# A SIGHT TO BEHOLD

Embark on your new journey of spectacular opulence with ŠKODA KUSHAQ. The new ŠKODA KUSHAQ delivers smart features along with the looks of magnificence that elevate your experience to a European standard. A car with a perfect harmony of elegant exterior and clever features makes every trip worthwhile. ŠKODA KUSHAQ carries a spotlight of its own, and it is sure to be a head-turner when you take it out on the road.

## A. Front Grill

The ŠKODA KUSHAQ with the ŠKODA signature grille and chrome surround evokes feelings of strength and safety. The front is dominated by sharply cut headlamps and fog lamps. The chrome highlights on the front bumper air intake as well as the silver armoured front diffuser enhance the car's form.

## B. Crystalline Led Headlamps

The LED headlamps offer high performance with high energy efficiency. The main headlamps boast an eye-catching integrated strip of LED day time running lights.



## C. Crystalline Split Led Tail Lamps

The rear lights have LED technology as standard, while the crystalline design refers to Czech cubism and the country's glass-making tradition. Their sharp lines make the vehicle stand out confidently.

## D. Fog Light

Under poor light conditions, the fog lamps with their static cornering function come into their own, ensuring maximum safety.



# INTERIOR



# EXPERIENCE A MASTERPIECE

Stepping into a ŠKODA KUSHAQ is an experience of its own. Designed with a vision of ultimate comfort, ŠKODA KUSHAQ features an elegant spacious design with chrome details and ambient lighting providing you with a handcrafted European ambiance.

## **A. Design and Functionality**

The car features a newly designed multifunctional 2-spoke steering wheel with chrome scrollers which allow you to control the radio, phone, and audio. The multifunction smart display instrument cluster behind the steering wheel also adds to the design of the car.

## **B. Comfort and Space**

ŠKODA's craftsmanship is proudly presented inside. The front features ventilated black leather seats with perforated grey design while the rear has black leatherette seats with perforated grey design. Surrounded by high quality materials, you are sure to enjoy the drive, no matter where you sit. The exceptionally spacious interior offers generous legroom and headroom for everyone.



## **C. Climatronic Air Conditioning with Aircare Function**

Climatronic automatic air conditioning with electronic regulation of cabin temperature to ensure that everyone in the car has maximum comfort.

## **D. Ambient Light Package**

Available in white colour, the ambient lighting helps dial up the snugness.



# COMFORT & CONVENIENCE



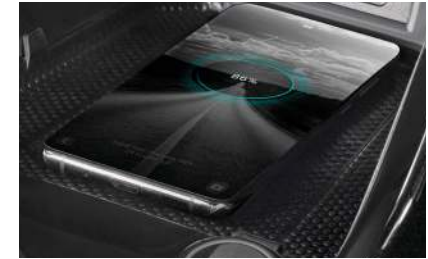
## 25.4 cm Infotainment System

The 25.4 cm ŠKODA infotainment system is equipped with touch and gesture control with which you can navigate, make calls, browse the menu and drive without a worry.



## KESY

The Keyless Entry Start & Stop System enables convenient locking and unlocking of the car.



## Wireless Charging

Wirelessly charge your phone while driving.



## Cruise Control

In addition to maintaining the preselected speed, cruise control enables you to increase or reduce speed without using the pedals.



## Two USB-C Socket in Front And Rear

To make sure that your mobile devices are charged where ever you sit in the car, the Kushaq comes equipped with USB-C sockets in front and rear.



## Instrument Cluster

The information display has 4 global MFA dials with 8.89cm TFT display MAXIDOT showing the gear-shift indicator. The multifunctional segment displays basic travelling time, distance travelled, average speed, immediate consumption, average consumption, travel distance before refuelling, service interval, outside temperature and clock.



## All New 2-Spoke Steering Wheel With Chrome Scrollers

When function meets indulgence, the outcome is rather multifunctional. The steering wheel, clad with leather and chrome inserts, is equipped with audio controls, paddle shifters as well as the option of height and length adjustment for the driver.



## Rear View Camera With Static Guidelines

To make driving and parking a breeze, the car is equipped with a rear camera.



#### **Electric Sunroof with Anti - Pinch Technology**

The electric sunroof with anti - pinch technology allows you to create a large open space above the seats, so you can enjoy new vistas and the journey even more.



#### **Adjustable Rear A/C Vents**

The adjustable rear A/C vents ensure comfort to all passengers abode the ŠKODA KUSHAQ.



#### **Cooled Glovebox**

The glovebox is spacious enough to hold everything you need. It can also be cooled down to keep your snacks fresh.



#### **Storage in Front Centre Armrest**

A place to house your devices, snacks and even electronics so they are within reach.



#### **Sound System with 6 High Performance Speakers and Subwoofer**

Enjoy absolute sound clarity with six speakers, including a speaker in the dashboard and a subwoofer in the luggage compartment.



#### **Cupholders in Armrest**

Designated spaces for bottles and cups in the rear of the car help in elevating functionality of the interiors.

#### **Luggage Capacity**

The car with standard rear seats (featuring 60:40 folding split) offers 385 litres of boot space with 2 fixed hooks and top-tether points. The rear seats can also be folded using a remote release button located in the luggage compartment.



## SAFETY & TECHNOLOGY



### 6-Airbag System

In extreme situations, where the driver cannot actively influence the outcome, the car's passive elements take over – like airbags which is equipped with front driver and passenger airbags, 2-side airbags, and curtain airbags in case of a collision.



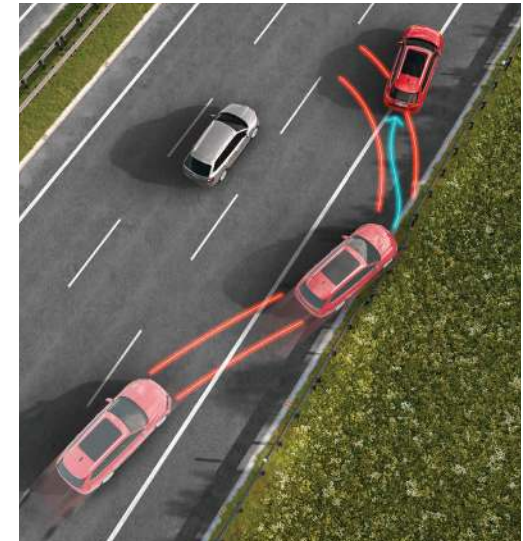
### Hill Hold Control

HHC allows a safe start uphill without using the parking brake.



### Electronic Stability Control along with ABS

ESC helps to maintain directional stability and tyre traction during understeer and oversteer while ABS helps to maintain control of the vehicle during emergency braking.



### Multi-Collision Brake

In case of an accident, the Multi-Collision Brake starts braking to prevent further uncontrolled movement of the vehicle, thus reducing the likelihood of further collisions.

## PERFORMANCE & TRANSMISSION



### 1.0 TSI Engine

The Award-winning 1.0 TSI engine, with 85 kW power and 178 Nm torque, is powerful yet efficient.



### Manual Transmission

The car is offered with a 6-speed manual transmission.



### Automatic Transmission

The car can be equipped with 6-speed automatic transmission.



EQUIPMENT	ACTIVE	AMBITION	STYLE
<b>DESIGN</b>			
<b>Wheels</b>			
Steel wheels R(16) + wheel cover, Lhotse	■	-	-
Alloy wheels R(16), Grus	-	■	-
Alloy wheels R(17), Atlas	-	-	■
Spare wheel R(15)	■	■	-
Spare wheel R(16)	-	-	■
<b>Visibility</b>			
Door handles in body colour without chrome accents	■	■	-
Door handles in body colour with chrome accents	-	-	■
Roof rails black	■	-	-
Roof rails silver	-	■	■
ŠKODA Piano Black fender garnish with chrome outline	■	■	■
ŠKODA signature grille with chrome surround	■	■	■
Chrome highlights on front bumper air intake	-	-	■
<b>Exterior colour coding</b>			
Black grained armoured front and rear diffuser	■	-	-
Silver armoured front and rear diffuser	-	■	■
Black side armoured cladding	■	-	-
Silver side armoured cladding	-	■	■
Manually foldable external mirrors - body coloured	■	-	-
Electrically foldable external mirrors - body coloured	-	■	■
Matte black plastic cover on B-pillar and C-pillar	■	■	-
Glossy black plastic cover on B-pillar and C-pillar	-	-	■
Window chrome garnish	-	-	■
Trunk chrome garnish	-	-	■
<b>Interior design, chrome décor and colours</b>			
Dashboard with grained and textured décor	■	-	-
Dashboard with painted décor insert	-	■	■
Premium honeycomb décor on dashboard	■	■	■
Black gloss dashboard line	■	■	-
Chrome dashboard line	-	-	■
Chrome décor for interior door handles	-	■	■
Chrome ring on the gear-shift knob	■	■	■
Black plastic handbrake with full cover and handle button - black	■	■	-
Chrome insert under gear-shift knob and handbrake handle button - chrome	-	-	■

EQUIPMENT	ACTIVE	AMBITION	STYLE
Black gloss air conditioning vents	■	-	-
Chrome trim on air conditioning vents and insert on steering wheel	-	■	■
Chrome trim on air conditioning duct sliders	■	■	■
Front scuff plates with KUSHAQ inscription	-	■	■
<b>SAFETY</b>			
<b>Illumination</b>			
Halogen headlamps with ŠKODA crystalline day time running lights	■	-	-
ŠKODA crystalline LED headlamps with day time running lights	-	■	■
Crystalline LED tail lamps with reflective lamp	■	■	-
Crystalline full LED tail lamps	-	-	■
Front fog lamps with static cornering function	-	■	■
Light assistant - auto headlamps	-	-	■
Automatic coming/leaving home lights	-	-	■
LED reading lamps - front and rear	■	■	■
Ambient interior lighting - dashboard, door handles	-	Dashboard	■
Rear LED number plate illumination	■	■	■
<b>Visibility</b>			
Anti-glare outside rear view mirror	■	■	■
Automatic front wiper system with rain sensor	-	-	■
Rear wiper and defogger	-	■	■
Auto dimming interior rear view mirror	-	-	■
<b>Braking and stabilising systems</b>			
(ESC) Electronic Stability Control, (ABS) Anti-lock Braking System and (EBD) Electronic Brakeforce Distribution	■	■	■
(MCB) Multi Collision Braking	■	■	■
(HHC) Hill Hold Control	-	■ (AT Only)	■
(EDS) Electronic Differential Lock System, XDS & XDS+ (over 30 Km/h)	■	■	■
(ASR) Anti-Slip Regulation and (MSR) Motor Slip Regulation	■	■	■
(BSW) Brake Disc Wiping	■	■	■
(ROP) Roll Over Protection	■	■	■
<b>Airbags</b>			
Driver and passenger front airbags	■	■	■
Curtain airbags	-	-	■

EQUIPMENT	ACTIVE	AMBITION	STYLE
Front side airbags	-	-	■
<b>Occupant restraint</b>			
Three-point seatbelts at front	■	■	■
Two three-point outer seatbelts and centre lap belt at rear	■	■	■
Height adjustable head restraints at front and rear	■	■	■
Front seatbelt reminder	■	■	■
<b>More</b>			
Tyre pressure monitoring system	-	-	■
Rough Road Package and engine protection	■	■	■
Child-proof rear door locking	■	■	■
Child-proof rear window locking	■	■	■
ISOFIX for rear seats	■	■	■
Door-open indicator	■	■	■
Emergency triangle in the luggage compartment	■	■	■
Dual-tone warning horn	-	■	■
<b>SECURITY</b>			
<b>Electronic theft deterrence</b>			
Engine immobiliser with floating code system	■	■	■
Anti-theft alarm	-	-	■
<b>Remote operation</b>			
Central door locking with speed sensor	■	■	-
KESSEY (Engine Start/Stop & Locking/Unlocking of Door)	-	-	■
Remote control with foldable key	■	■	■
Central locking and unlocking of doors and boot lid	■	■	■
<b>COMFORT</b>			
<b>Seats</b>			
Rear seats split 60:40 foldable with centre armrest	-	■	■
Height adjustment for driver seat	-	■	■
Front centre armrest with storage	■	■	■
Rear centre armrest	-	■	■
<b>Upholstery</b>			
Black fabric woven seats	■	-	-
Black fabric seats with dual colour sporty centre stripes	-	■	-
Ventilated black leather front seats with perforated grey design	-	-	■
Black leatherette rear seats with perforated grey design	-	-	■

EQUIPMENT	ACTIVE	AMBITION	STYLE
<b>Steering wheel</b>			
All new 2-spoke steering wheel with chrome scrollers	■	■	■
Height and length adjustable steering wheel	■	■	■
Steering wheel PU with MuFu	■	-	-
Steering wheel leather with MuFu	-	■	■
Paddle shifters	-	■ (AT Only)	■ (AT Only)
<b>Infotainment and connectivity</b>			
17.7 cm ŠKODA infotainment system	■	-	-
25.4 cm infotainment system with ŠKODA Play Apps	-	■	■
Wireless SmartLink - Apple Carplay and Android Auto	-	■	■
6 speakers	■	■	-
ŠKODA sound system with 6 high performance speakers and subwoofer	-	-	■
MyŠKODA Connect - inbuilt connectivity	-	■	■
<b>Climate control</b>			
Manual AC	■	-	-
Climatronic-auto AC with control touch panel and AirCare function	-	■	■
Adjustable dual rear AC vents	-	■	■
<b>Sunroof</b>			
Electric sunroof with bounce back system	-	-	■
<b>Additional upholstery</b>			
Front and rear door armrest with cushioned upholstery	■	■	-
Front and rear door armrest with cushioned leatherette upholstery	-	-	■
<b>Windows</b>			
Power windows front and rear, 4 x controls on driver side	■	■	■
One-touch automatic operation (only driver side)	-	■	■
Bounce-back system (only driver side)	-	■	■
<b>More</b>			
Dead pedal for foot rest	-	■	■
<b>CONVENIENCE</b>			
<b>Information display</b>			
2-dial global MFA (gear-shift indicator, multifunctional segment display basic)	■	-	-

EQUIPMENT	ACTIVE	AMBITION	STYLE
4-dial global MFA with 8.89 cm TFT display MAXIDOT (gear-shift indicator, multifunctional segment display, basic travelling time, distance travelled, average speed, immediate consumption, average consumption, travel distance before refuelling, service interval, outside temperature and clock)	-	■	■
<b>Electronic driving aid</b>			
Cruise control	-	■	■
Rear view camera - with static guidelines	-	■	■
Parktronic sensor at rear	■	■	■
<b>More</b>			
12V power socket in front centre console	■	■	■
Two USB-C sockets in front (data and charging)	-	■	■
Wireless charging (with selected smartphones)	-	-	■
Front sun visors with vanity mirror on co-driver side	■	■	■
Sharkfin antenna	-	■	■
Four foldable roof handles	■	■	■
<b>STORAGE</b>			
385 litres of boot space with two fixed hooks and top-tether points	■	■	■
Storage compartment in the front and rear doors	■	■	■
Bottle holders in the front and rear doors	■	■	■
Front cup holders with easy mat operation	■	■	■
Cup holders - centre rear armrest	-	■	■
Storage compartment in the front centre console and centre armrest	■	■	■
Glovebox compartment with cooling	-	■	■
Rear parcel shelf	-	■	■
<b>Simply clever features</b>			
Sunglass holder in roofliner	-	■	-
Front seat back pockets (driver and co-driver)	■	■	■
SmartClip ticket holder	■	■	■
Elastic bands on both front doors	-	■	■
Two USB-C sockets in rear (charging)	-	■	■
Coat hook on rear roof handles	■	■	■
Utility recess on the dashboard	■	■	■
Reflective tape on all four doors	■	■	■
Smartgrip mat for one hand bottle operation	■	■	■



**ACTIVE**  
STEEL WHEELS R(16), LHOTSE  
BLACK FABRIC WOVEN SEATS



**AMBITION**  
ALLOY WHEELS R(16), GRUS  
BLACK FABRIC SEATS WITH DUAL COLOUR SPORTY CENTRE STRIPES



**STYLE**  
ALLOY WHEELS R(17), ATLAS  
BLACK FRONT LEATHER/REAR LEATHERETTE SEATS WITH PERFORATED GREY DESIGNS



TECHNICAL DESCRIPTION	1.0 TSI
<b>Engine</b>	
Engine type	Turbo charged Petrol Engine
Cylinders	3
Displacement [cm <sup>3</sup> ]	999
Max. power/revs [kW(Ps) at rpm]	85kW(115Ps)@5000-5500
Max. torque/revs [Nm at rpm]	178Nm@1750-4500
Fuel consumption (combined) [kmp/l]	17.88 MT   15.78 AT
<b>Transmission</b>	
Wheel drive	Front wheel drive
Transmission	Automatic/Manual 6-speed
<b>Chassis</b>	
Front axle	McPherson suspension with lower triangular links and stabiliser bar
Rear axle	Twist-beam axle
Braking system	Hydraulic Diagonal split vacuum Assisted Braking System
Brake – front	Disc brakes
Brake – rear	Drum
Steering system	Electro-Mechanical Steering (Power Assisted)
Wheels	Steel wheel 6J x R16 (Active), Alloy wheel 6J x R16 (Ambition), Alloy wheel 6.5J x R17 (Style)
Tyres	205/60 R16 (Active and Ambition), 205/55 R17 (Style)
<b>Outside dimensions</b>	
Length [mm]	4225
Width [mm]	1760
Height [mm]	1612
Wheel base [mm]	2651
Ground Clearance [mm]	188
<b>Inside dimensions</b>	
Storage capacity [l]	385
Storage capacity with rear seatback folded down [l]	1405
<b>Weights</b>	
Kerb weight (without driver) [kg]	1185-1235 MT   1 245-1 265 AT
Gross weight [kg]	1630 MT   1660 AT
<b>Liquids</b>	
Tank capacity [l]	50

## COLOURS

Honey Orange



Tornado Red



Carbon Steel



Brilliant Silver



Candy White



COMPLETE PEACE OF MIND WITH

0

**PERIODIC  
SERVICE COST  
FOR TWO YEARS**



**ŠKODA M.A.W.**

Showroom : Thapathali, Kathmandu, **Showroom Hotline : 9801075632**  
**Contact : 9801905495, 9802317872, 9802317873, 9801905647, 9802317878**  
[www.skoda.com.np](http://www.skoda.com.np), Email : [skoda@mawnepal.com](mailto:skoda@mawnepal.com)

Follow us on  
 f [www.facebook.com/skodanepal](https://www.facebook.com/skodanepal)  
 @ [www.instagram.com/skoda\\_nepal](https://www.instagram.com/skoda_nepal)  
 v [www.youtube.com/skodanepal](https://www.youtube.com/skodanepal)

Dealer:

